
TM

SPEC Benchmark

Summary

Attached is a 1-page summary of a SPEC benchmark result. The SPEC benchmarks measure CPU integer or floating point performance on the system tested. These results are in accordance with the appropriate SPEC run and reporting rules.

Further information for this and other SPEC benchmark results are available from your Hewlett-Packard sales representative or by contacting the Standard Performance Evaluation Cooperative (SPEC) at the following location:

SPEC c/o NCGA, Suite 200,
2722 Merrilee Drive,
Fairfax, VA 22031-4499

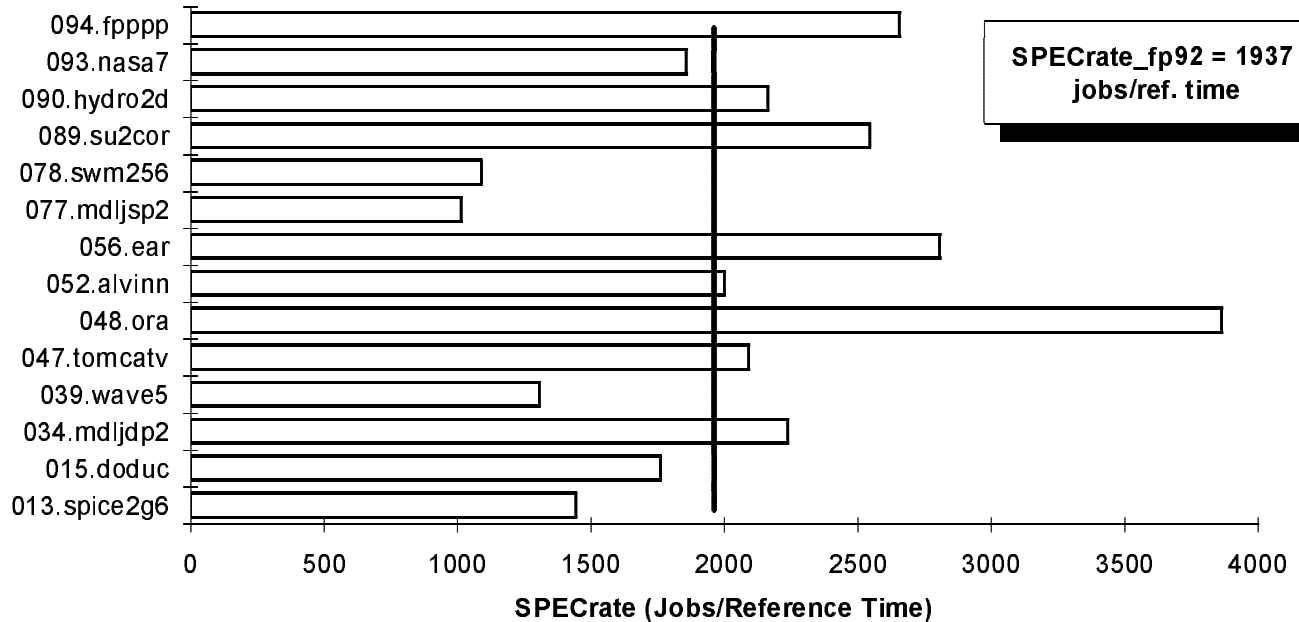
Phone: (703) 698-9600
Fax: (703) 560-2752

SPEC is a trademark of the Standard Performance Evaluation Corporation

Copyright © 1993 Hewlett-Packard Company
All Rights Reserved. Reproduction,
adaptation, or translation without
prior written permission is prohibited
except as allowed under the copyright
laws.

SPEC CFP92 Homogeneous Capacity Summary

RESULTS: Benchmark Name	Number Of Copies	Time (Sec)	SPEC-rate	Hewlett-Packard Company HP 9000 Model G40/H40/I40	
013.spice2g6	1	393	1448	Hardware	
015.doduc	2	50	1765	Model Number	G40/H40/I40
034.mdljdp2	2	150	2242	CPU	64MHz PA-RISC 1.1
039.wave5	2	134	1310	FPU	64MHz PA-RISC 1.1
047.tomcatv	1	30	2095	Number of CPUs	1
048.ora	2	91	3868	Primary Cache	256KBI+256KBD off chip
052.alvinn	1	91	2004	Secondary Cache	None
056.ear	1	215	2813	Other Cache	None
077.mdljsp2	2	156	1019	Memory	64MB
078.swm256	2	551	1093	Disk Subsystem	1.3GB HP C2474S
089.su2cor	1	120	2550	Other Hardware	None
090.hydro2d	1	150	2166	Software	
093.nasa7	1	214	1862	O/S & Version	HP-UX 9.0
094.fpppp	2	164	2661	Compilers & Version	A.09.16 HP C Compiler FORTRAN/9000 7/21/92 (73.53)
Geo. Mean: SPECrate_fp92			1937	Other Software	None
Hardware Availability:			Oct-92	File System Type	HP-UX
Software Availability:			Oct-92	System State	Multi User
License #:	3	Tested:	Aug-92	By:	HP
				Of:	Cupertino, CA



Tuning Parameters/Notes/Summary Of Changes:
 All Benchmarks: EXTRA_LDFLAGS = -Wl,-a,archive EXTRA_FFLAGS = EXTRA_CFLAGS = +DS1.1b +DA1.1
 015.doduc, 034.mdljdp2, 077.mdljsp2, and 094.fpppp: OPT = +OP
 039.wave5, 047.tomcatv, 048.ora, 089.su2cor, and 090.hydro2d: OPT = +OP3
 013.spice2g6: EXTRA_FFLAGS = +OP3 +Os -WP,'-nv -ind=-1' +Obb1000 015.doduc: EXTRA_FFLAGS = -w -WP,'-nv -inline -ind=3 -inff='
 052.alvinn: OPT = -O EXTRA_CFLAGS = -Aa +e 056.ear: OPT = -O EXTRA_CFLAGS = -Aa -J -D_HPUX_SOURCE -Dfloat=double
 077.mdljsp2 and 094.fpppp: EXTRA_FFLAGS = -w +Os 093.nasa7: EXTRA_CFLAGS = -DTIMES EXTRA_FFLAGS = -w -WP,'agressive=' +OP
 Copyright Hewlett-Packard Co. In accordance with CFP92 Run and Reporting Rules